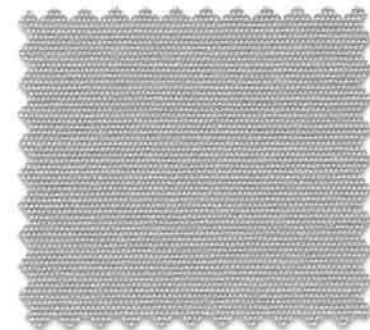


The background of the entire image is a close-up, artistic shot of several rolls of fabric. The fabric is covered in numerous small, glistening water droplets, which are catching the light and creating a shimmering effect. The rolls are arranged in a fan-like pattern, with some showing a fine, woven texture. The lighting is dramatic, with strong highlights and deep shadows, emphasizing the texture and the moisture on the fabric. In the lower-left corner, there is a small, delicate green plant with tiny buds, adding a touch of nature to the industrial scene.

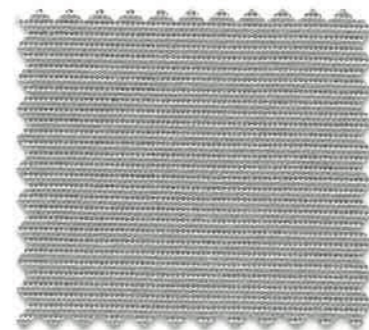

SANDATEX
**MARKIS
VÄV**
VATTENTÄT



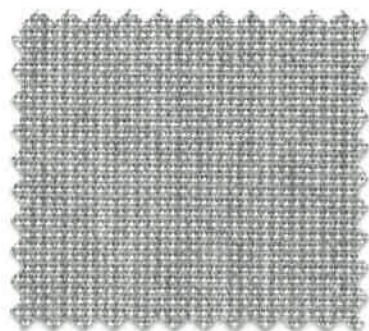
15/200



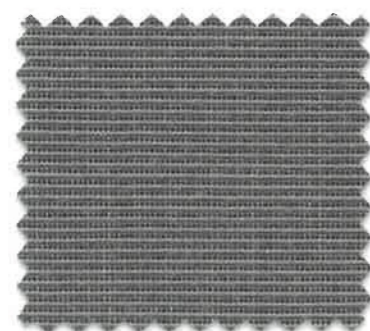
79/200



407/294



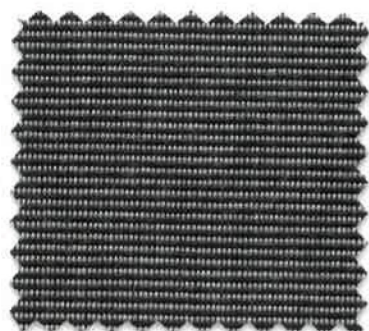
986/227



407/251



97/200



407/279



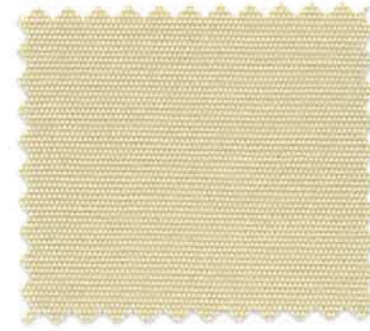
407/224



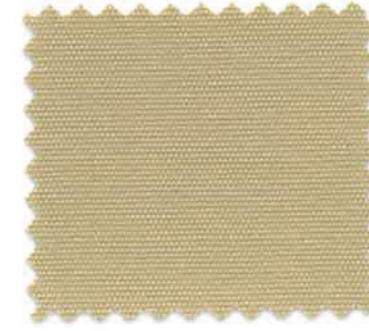
24/200



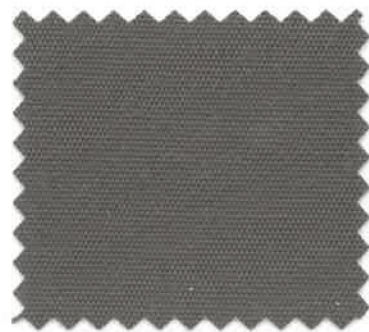
15/293



15/201



52/200



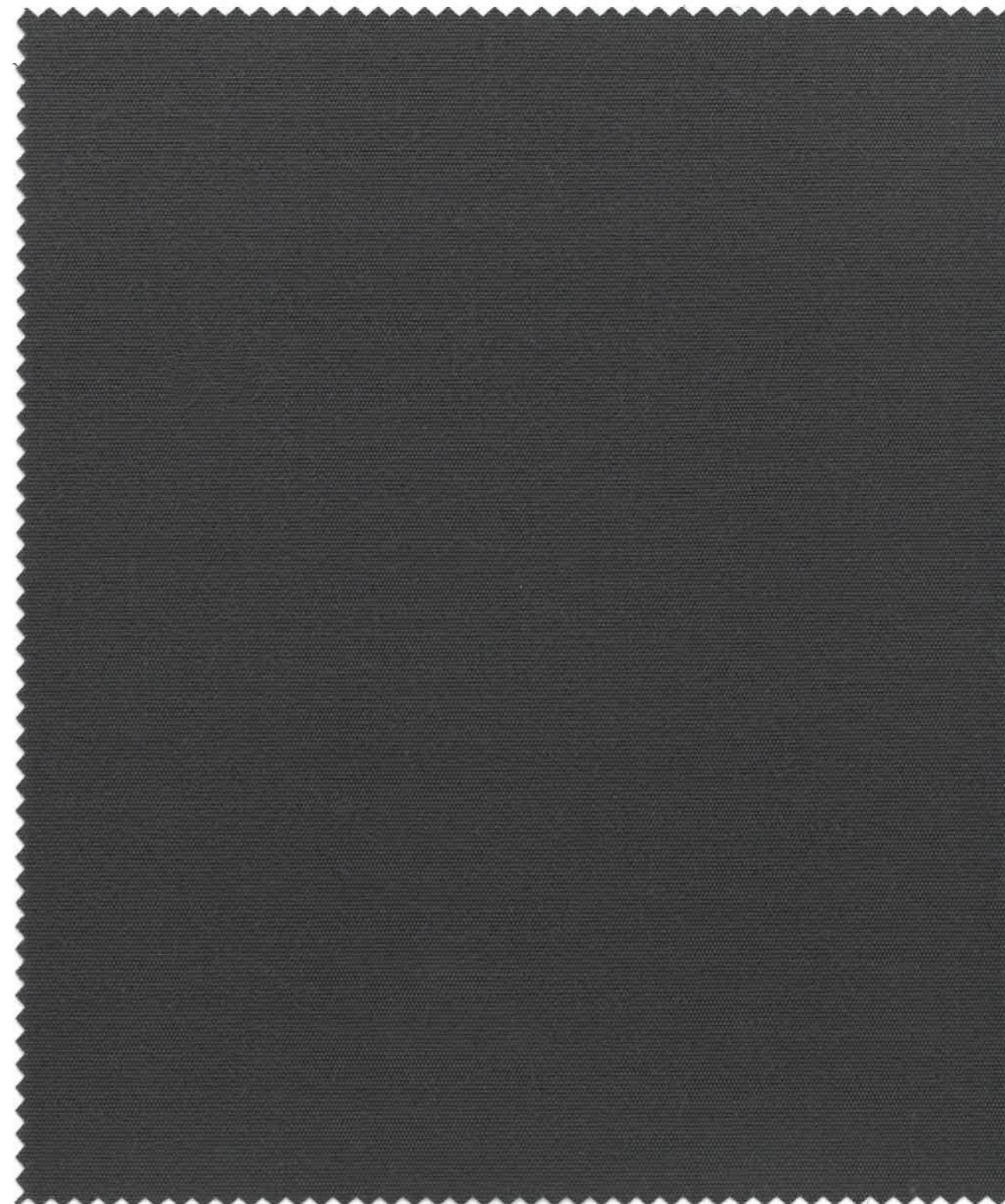
926/200



73/200



5/200



97/200

VATTENTÄT MARKISVÄV

TEKNISK INFORMATION

Komposition	100% spinnfärgad acryl
Bredd	120 cm
Stycklängd	60 m
Vikt	340 g/m ²
Ljushärdighet	7 - 8 på blåskalan
Beläggning	HI-CLEAN®, smuts- och vattenavvisande
Vattenpelare	1000 mm